



## Barry County 4-H Market Rabbit Notebook

Name: \_\_\_\_\_

Name of 4-H Club: \_\_\_\_\_

Project Leader Name: \_\_\_\_\_ Years in project: \_\_\_\_\_

Market journals are required for all market rabbit entries. Market journals must be presented by the exhibitor for judging at the fair during the show on the first Sunday of fair from 9 a.m. to 2 p.m. during the rabbit and cavy show. Failure to complete a market journal for judging will disqualify the member from exhibiting at the Barry County Fair. In the event of extenuating circumstances, another 4-H member may present the journal for judging – this can result in a lower award.

This record is a part of your 4-H market rabbit project work. By keeping records up-to-date, you will be able to see how much progress you make as you set goals and work to accomplish them. Type or write neat and clearly. Your journal should be displayed in a 3-ring binder or report cover that contains only this year's journals. Feel free to add extra pages!

### Project pictures

- ✓ *Pictures are required part of this journal. Taking pictures of your project animal(s) throughout the project will indicate how your animal(s) have grown and developed.*
- ✓ *Remember, pictures are nicer when the 4-H'er is in the picture. Add pictures to your journal on a separate piece of paper.*

Information can be found from the following sources:

- STANDARD OF PERFECTION
- AMERICAN RABBIT BREEDERS ASSOCIATION
- MSU RABBITS TRACKS
- DOMESTIC RABBIT GUIDE
- OHIO STATE UNIVERSITY
- KANSAS STATE EXTENSION

The Rabbit and Cavy Developmental Committee encourages 4-H Leader & parent assistance. If you have questions, call the Resource person for rabbit notebooks, posters and educational exhibits in the fair book or the Extension Office.

The market notebook fulfills the educational requirement for fair. You are not required to complete a regular educational notebook or educational exhibit if you are exhibiting a market project.

*Developed by the Barry County Rabbit & Cavy Developmental Committee  
Approved February 2020*

## Requirements:

- Decorative Cover
- Guidelines-current year only
- 4-H Story-tell about you and your project
- Life Skill Wheel-See Life Skill Sheet
- Tell about an interesting experience (i.e., breeding problem(s)) that you had during this year's project
- Educational Item: One per year according to your age (Do not repeat within age group)
  - Ages 9-11:
    - Label parts of rabbit using the illustration included in this packet.
    - List three breeds used for market rabbits. Explain the breed standard and origin of the rabbit.
    - Explain 6 market related items that are used in judging meat quality rabbits. (example: condition of rabbit)
  - Ages 12-14:
    - Label the cuts of meat using the illustration included in this packet and explain three methods of preservation of the product. (example of preservation: fresh, freezing, canning, jerky, etc.)
    - Explain one disease, parasite, virus or condition that could affect meat production.
    - Review the pictures of a market pen provided in this packet and provide written reasons using proper terms.
  - Ages 15-18
    - Describe the butchering technique for a rabbit. Also describe a proper technique to save the pelt. Include pictures.
    - Write a paragraph explaining three uses for rabbits. Include the pros and cons of each. (Examples: meat, lab, pelt, pets, breeding, etc.)
    - Label the skeletal system and muscular systems included in this packet.
- Market Unit: Use market record sheet(s) included in this packet
- Pictures
- PURCHASED MARKET UNITS-BILL OF SALE IS REQUIRED

## Project information

*Homegrown rabbit(s):* The start date of the project will be the day the doe is bred. The end of the project will be weigh in at fair.

*Purchased rabbit(s):* The start of the project will be the date the rabbit(s) are in your possession. The end of the project will be weigh in at fair.

Your journal figures can include all rabbits kindled or purchased for this project, not just the ones that actually go to fair.

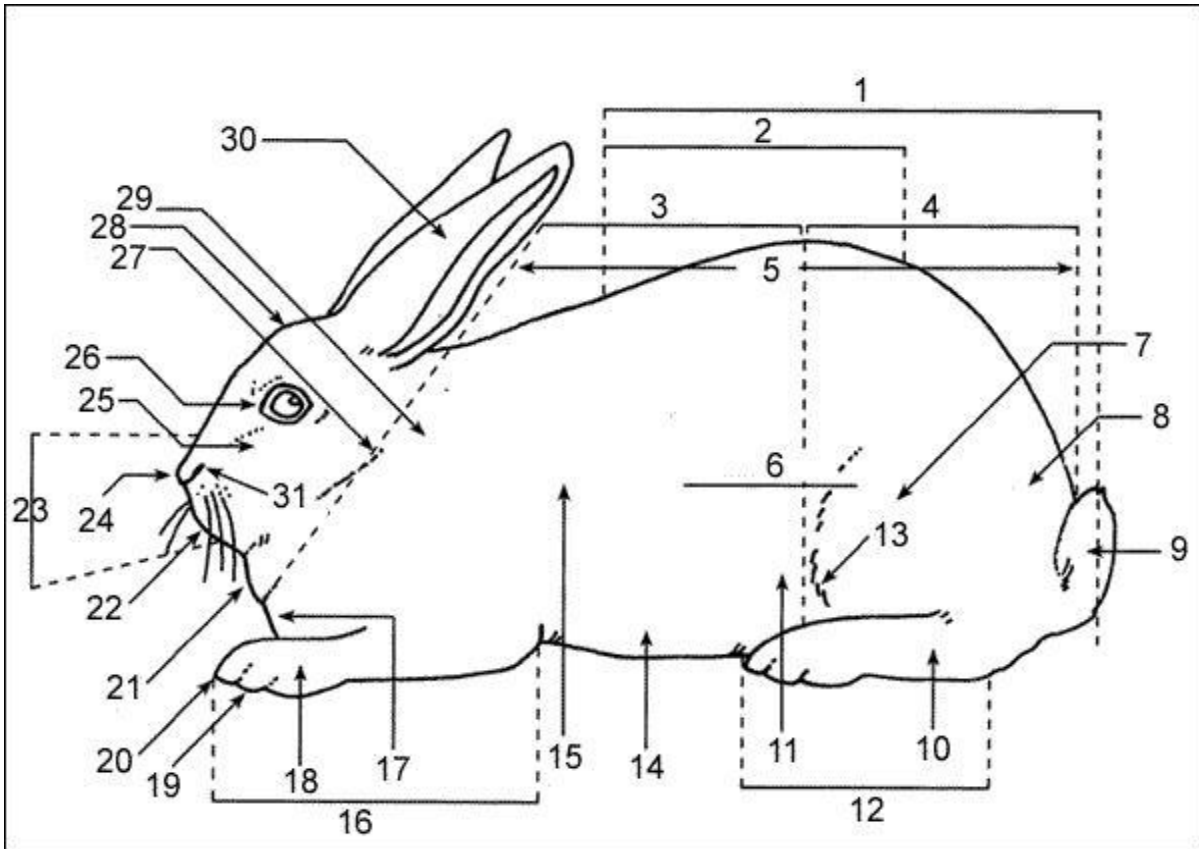
Project Start Date \_\_\_\_\_ Project End Date \_\_\_\_\_

The doe(s) were bred on: \_\_\_\_\_

The doe(s) kindled on: \_\_\_\_\_

For purchased unit(s), date purchased: \_\_\_\_\_

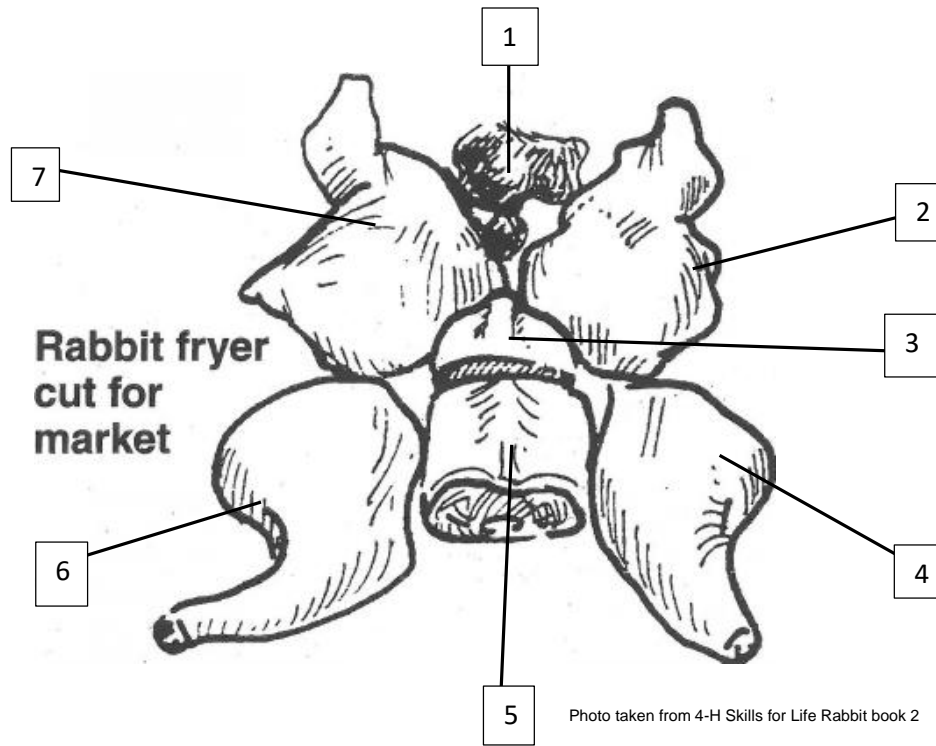
# LABEL THE PARTS OF A RABBIT (9-11)



1. \_\_\_\_\_
2. \_\_\_\_\_
3. \_\_\_\_\_
4. \_\_\_\_\_
5. \_\_\_\_\_
6. \_\_\_\_\_
7. \_\_\_\_\_
8. \_\_\_\_\_
9. \_\_\_\_\_
10. \_\_\_\_\_
11. \_\_\_\_\_
12. \_\_\_\_\_
13. \_\_\_\_\_
14. \_\_\_\_\_
15. \_\_\_\_\_

16. \_\_\_\_\_
17. \_\_\_\_\_
18. \_\_\_\_\_
19. \_\_\_\_\_
20. \_\_\_\_\_
21. \_\_\_\_\_
22. \_\_\_\_\_
23. \_\_\_\_\_
24. \_\_\_\_\_
25. \_\_\_\_\_
26. \_\_\_\_\_
27. \_\_\_\_\_
28. \_\_\_\_\_
29. \_\_\_\_\_
30. \_\_\_\_\_

# Label the Cuts of Meat (12–14)



1. \_\_\_\_\_

2. \_\_\_\_\_

3. \_\_\_\_\_

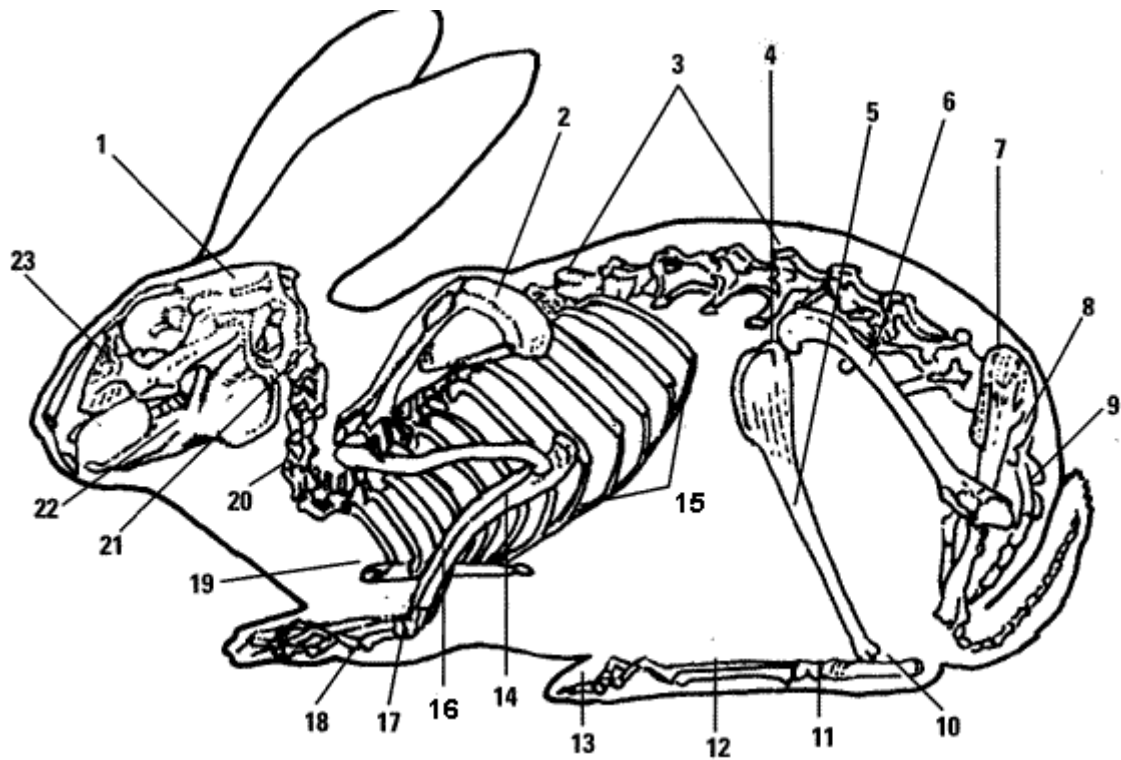
4. \_\_\_\_\_

5. \_\_\_\_\_

6. \_\_\_\_\_

7. \_\_\_\_\_

# LABEL THE SKELETAL SYSTEM OF A RABBIT (15-19)



Picture from Geouga County 4-H rabbit skill-a-thon study guide

1. \_\_\_\_\_
2. \_\_\_\_\_
3. \_\_\_\_\_
4. \_\_\_\_\_
5. \_\_\_\_\_
6. \_\_\_\_\_
7. \_\_\_\_\_
8. \_\_\_\_\_
9. \_\_\_\_\_

16. \_\_\_\_\_
17. \_\_\_\_\_
18. \_\_\_\_\_
19. \_\_\_\_\_
20. \_\_\_\_\_
21. \_\_\_\_\_
22. \_\_\_\_\_
23. \_\_\_\_\_

**Market Rabbit** Monthly Feed Record & Expenses (all ages)

Month	Type of feed used - What are the ingredients (not just % of protein).	lbs. of feed used for the month	Cost of feed used for the month
December			
January			
February			
March			
April			
May			
June			
July			

Total cost of the feed \_\_\_\_\_

***Market Rabbit Expenses other than Feed (all ages)***

Items	April	May	June	July
Medical Fees				
Fair Fees (manure & Ins)				
Any other expenses* or supplies (please list)				
Monthly Totals \$				

\*With explanation

Total expenses other than feed \_\_\_\_\_



## Market Production Record (all ages)

Roaster

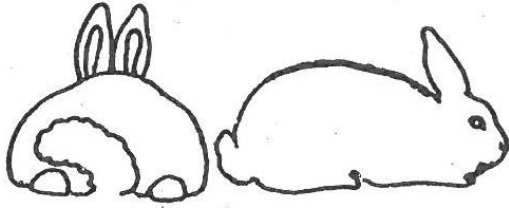
Fryer

Roasters are weighed weekly starting April 1<sup>st</sup>.

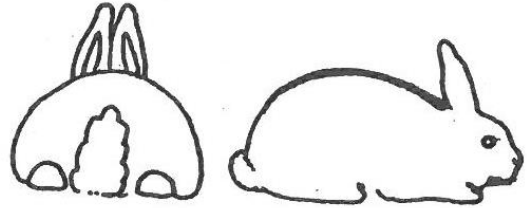
Fryers are weighed weekly starting at birth or purchased date.

Week	Weight of Litter	Amount of Feed
Sample	4.2, 4.2, 4.2, 4.3	70 ounces total
Week 1		
Week 2		
Week 3		
Week 4		
Week 5		
Week 6		
Week 7		
Week 8		
Week 9		
Week 10		
Week 11		
Week 12		

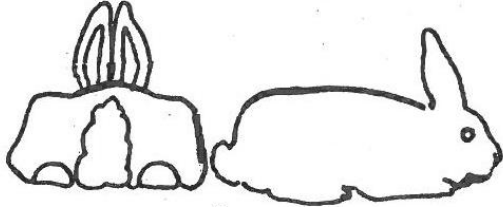
## Place This Class of Market Rabbits



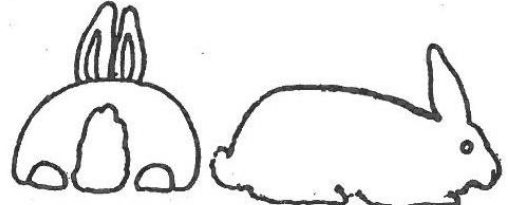
1.



2.



3.



4.

Photos from Extension Bulletin AS/R 109.12

When selecting your entry of single fryers, roasters or stewers you are looking for the rabbit that most closely conforms to the required weight of that category. Understanding that the meat type is key you will select the rabbit that is full, solidly fleshed and round; an animal that will butcher with the maximum amount of meat with minimum offal. Well-developed shoulders are indicative of meat carrying properties as are a wide and deep loin and thick hindquarters. Once you have selected the animals that best meet those requirements you will then select for firmness of flesh, superiority of conditions and quality of fur.

Domestic Rabbits Nov Dec

### Class Placings

1. \_\_\_\_\_

2. \_\_\_\_\_

3. \_\_\_\_\_

4. \_\_\_\_\_